

The Almost Bride



By Steffany Sommers
steffanysommers@yahoo.com
| 818.472.0890



Logline

- In an attempt to preserve her parents' marriage, a former skating prodigy enlists a risk-adverse publishing executive to pose as her fiancé, but when their elaborate charade spirals out of control, can she fix her own relationship missteps to land a happy ending for everyone?

Genre & Tone

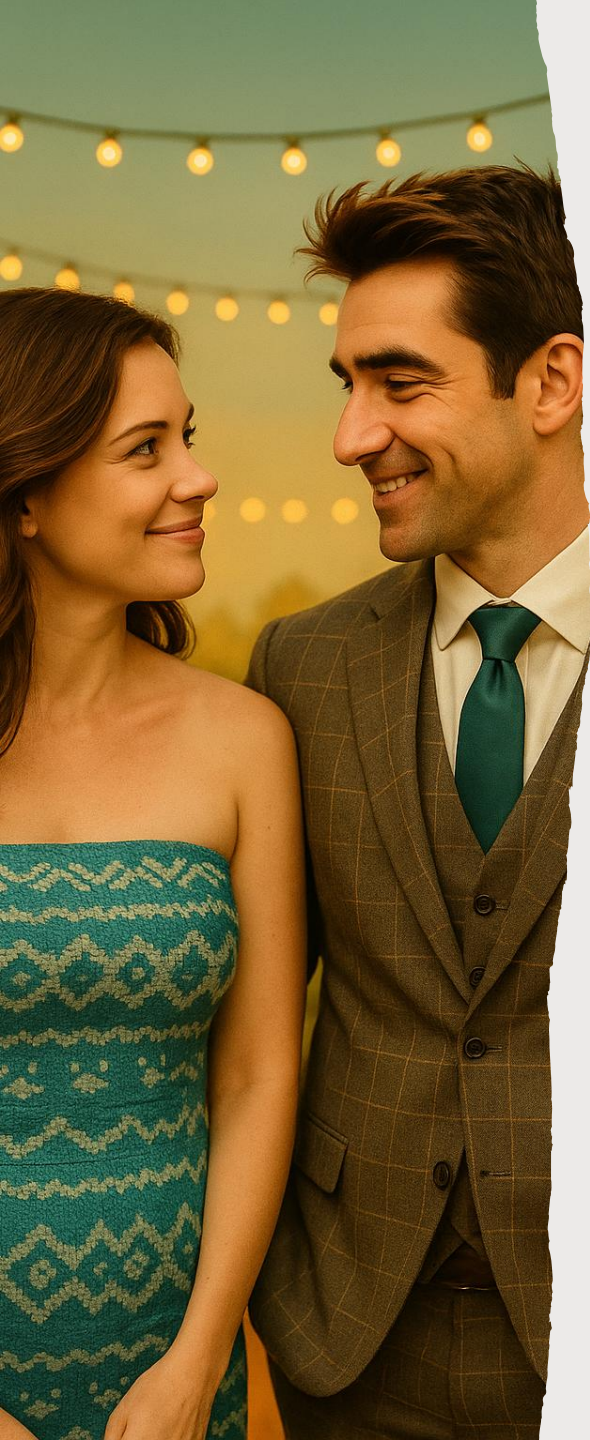
Genre:

- Romantic Comedy | Cultural Family Dramedy

Tone:

- Whimsical and heartfelt
- Equal parts sharp wit and emotional depth
- Like 'My Big Fat Greek Wedding' meets 'Notting Hill', with a Midwest soul and a multicultural edge
- Balance:
- 40% comedy
- 35% romance
- 25% emotional drama





Synopsis

- Livvy O'Beirne, a veterinary acupuncturist and former Olympic skating hopeful, creates a fake engagement to save her parents' marriage. With Kit, a cautious British exec, posing as her Aussie fiancé, the charade builds toward a Valentine's Day wedding. Holiday traditions, mistaken identities, and family chaos ensue. As their lie deepens, Livvy has a chance at a real love of her own, if she can stay out of her own way long enough to let it in.

Comedic Highlights



- Bearded dragon
acupuncture
sessions

- Cultural cuisine
clashes

- Kit's terrible
Australian accent

- Engagement
photo shoot
montage

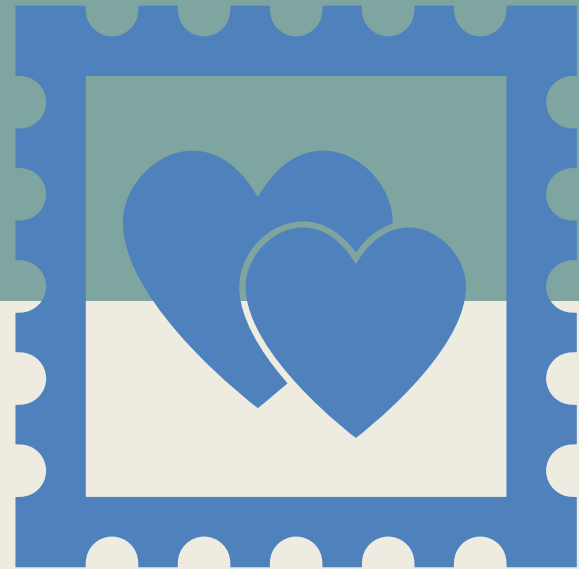
- Surprise
engagement party

- Gina's
unstoppable
wedding plans

- Kit checking exits
and smoke alarms
everywhere

Why This Story?

- This is a love letter to messy families, multicultural identity, and the pressure to be 'perfect.' It's based on personal experiences of blending cultures and the chaos of big, loving families. Livvy's journey reflects the challenge of being enough—without having to be perfect.



Characters


Livvy O'Beirne – Acupuncturist, former skater, vibrant, wounded



Kit Montgomery – British exec, anxious, endearing, ultra-prepared



Christian – Livvy's younger brother, charismatic, impulsive



Gina & Patrick – Passionate, multicultural parents



Spike – Livvy's bearded dragon and emotional support animal

Comparative Titles



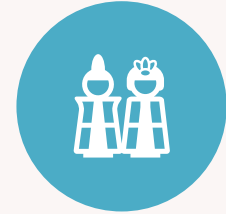
MY BIG FAT
GREEK WEDDING



WHILE YOU
WERE SLEEPING



THE PROPOSAL

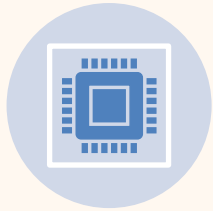


CRAZY RICH
ASIANS



NOTTING HILL

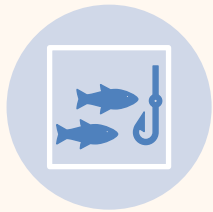
Marketability



Ideal for streaming platforms (Netflix, Amazon, Hulu)



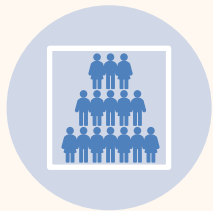
Seasonal appeal: Thanksgiving to Valentine's Day



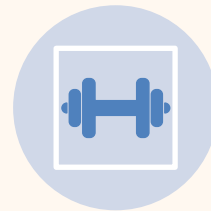
High-concept, culture-driven hook



Strong cross-generational themes



Easily castable with diverse leads



Rom-com with depth and commercial heart

Budget

Estimated Budget Range: \$2M – \$4M

- Mid-range romantic comedy budget with limited locations and manageable production scale
- Majority of scenes set in residential homes, a small-town community, and one or two office settings
- No major visual effects or stunts required
- Modest cast, allowing flexibility for either established talent or rising stars
- Seasonal set design and practical holiday decor create production value on a controlled budget
- Designed for high ROI potential on streaming platforms or festival circuit distribution

This film can be accomplished within a cost-effective framework while delivering high emotional and visual impact.



The Almost Bride

